

SPECIFICATIONS

- FREQUENCY RANGE: 1.0 – 2.0GHz
- INSERTION LOSS: 1.8 dB MAXIMUM
- VSWR: 1.5:1 MAXIMUM
- FLATNESS:
 - @ 10 dB: ± 0.45 dB MAXIMUM
 - @ 20 dB: ± 0.8 dB MAXIMUM
 - @ 40 dB: ± 1.5 dB MAXIMUM
 - @ 60 dB: ± 1.6 dB MAXIMUM
- ACCURACY:
 - 0–30 dB: ± 0.5 dB MAXIMUM
 - >30–50 dB: ± 1.0 dB MAXIMUM
 - >50–60 dB: ± 1.5 dB MAXIMUM
- MONOTICITY: GUARANTEED
- TEMPERATURE COEFFICIENT: ±0.025 dB/°C
- SWITCHING SPEED:
 - RISE TIME: 1.5µSEC MAXIMUM
 - FALL TIME: 50nSEC MAXIMUM
- RF POWER RATINGS: +10 dBm CW
- CONTROL: 8-BIT POSITIVE TRUE BINARY
- DC POWER SUPPLY:
 - +12V @ 100 mA MAXIMUM
 - 12V @ 20 mA MAXIMUM
- CONNECTORS:
 - SMA FEMALE FOR RF
 - DA15P FOR CONTROL

AVAILABLE OPTIONS:

- 001: 2 SMA MALE CONNECTORS
- 002: 1 SMA MALE AND 1 SMA FEMALE CONNECTOR
- 004: 30dB DYNAMVIC RANGE
- 005: +/-15V POWER SUPPLY

ENVIRONMENTAL RATINGS

- TEMPERATURE:
 - 40°C TO +75°C (OPERATING)
 - 65°C TO +125°C (STORAGE)
- HUMIDITY: MIL-STD-202F, METHOD 103B COND. B
- SHOCK: MIL-STD-202F, METHOD 213B COND. B
- VIBRATION: MIL-STD-202F, METHOD 204D COND. B
- ALTITUDE: MIL-STD-202F, METHOD 105C COND. B
- TEMPERATURE CYCLE: MIL-STD-202F, METHOD 107D COND. A

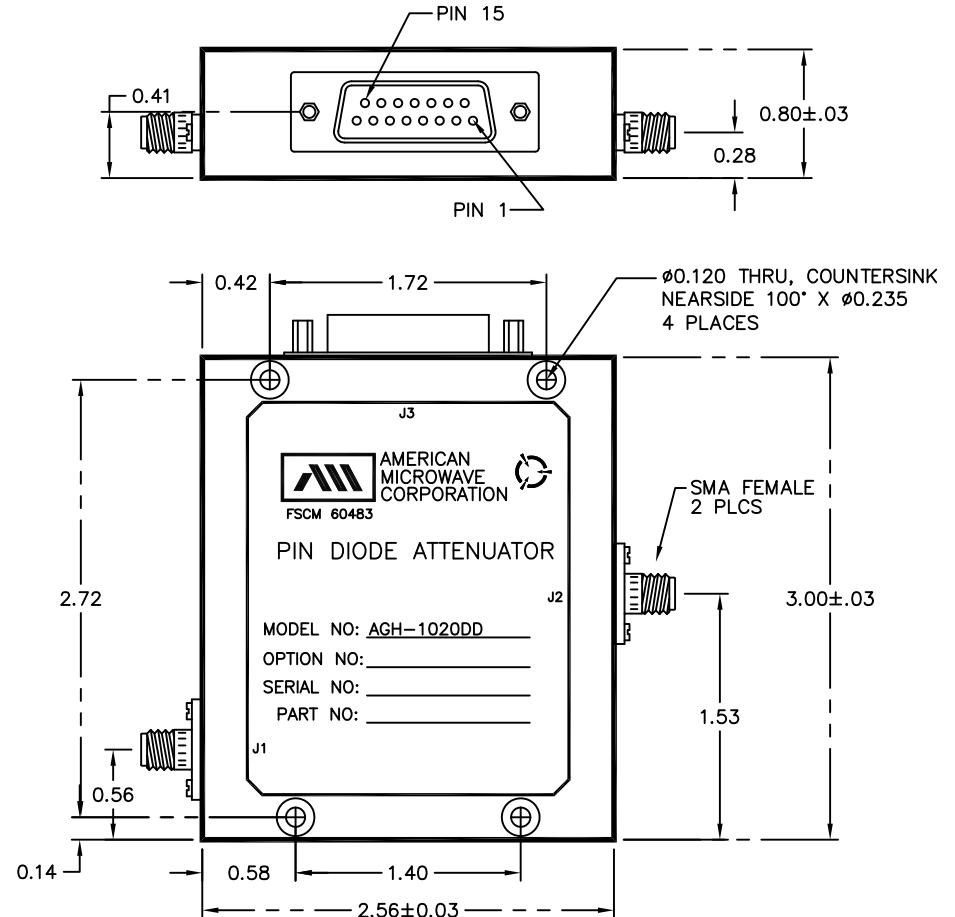
NOTE: THE ABOVE SPECIFICATIONS ARE SUBJECT TO CHANGE OR REVISION

* Units are designed to meet Environmental ratings but not tested. If Environmental Testing is required, please contact Sales Department.

J3 PIN FUNCTION	
PIN	FUNCTION
1	GND
2	ANALOG INPUT
3	N/C
4	GND
5	0.25 dB (LSB)
6	0.5 dB
7	1 dB
8	2 dB
9	4 dB
10	8 dB
11	16 dB
12	32 dB (MSB)
13	+V
14	-V
15	N/C

ALL DIMENSIONS ARE IN INCHES
TOLERANCES:
X.XX ±0.020
X.XXX ±0.010

REVISIONS				
ZONE	REV.	DESCRIPTION	DATE	APPROVED
	A	SEE ER# 026-14	5/15/14	Rd



AMERICAN MICROWAVE CORPORATION

7309-A GROVE ROAD
FREDERICK, MARYLAND 21704 USA
TEL: 301-662-4700 FAX: 301-662-4938
WEBSITE: www.americanmic.com
E-MAIL: sales@americanmic.com
ISO 9001:2000 CERTIFIED



APPROVALS		DATE	TITLE			
DRAWN <i>K JPMMS</i>		5/15/14	PRODUCT FEATURE AGH-1020DD			
ENG. <i>Rd</i>		5/15/14	SIZE A	FSCM NO. 60483	DWG NO. 100-8548	REV. A
QAE <i>K JPMMS</i>		5/15/14	SCALE N:S		SHEET 1 OF 1	